

## The characteristics that naturally define Balux concrete



Concrete is an unnameable material that accumulates a multitude of imprints throughout the manufacturing process. Every products that is created brings a result that is both unique and imperfect which forms a whole perfectly reflecting the natural beauty of concrete.



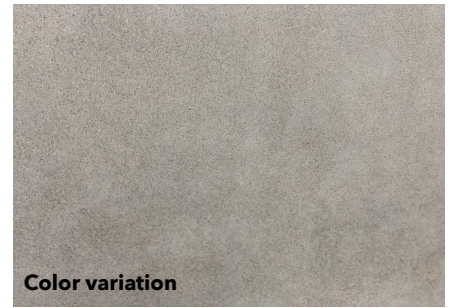
**Air bubble**

### AIR BUBBLE

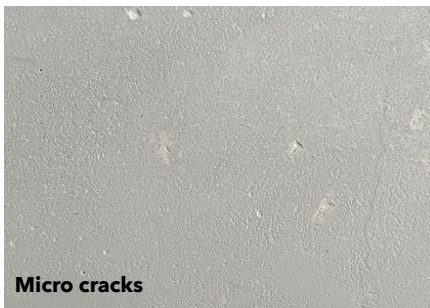
The process of making concrete products can leave room for trapped air which results in small holes forming in the surface. From project to project, these can vary in size and number. This characteristic does not diminish the quality of the concrete and adds texture and character to it.

### COLOR VARIATION

Concrete is made up of several raw materials which may, depending on the mixes, lead to certain variations in color. Concrete is not a material chosen for its homogeneous appearance or uniform look, on the contrary!



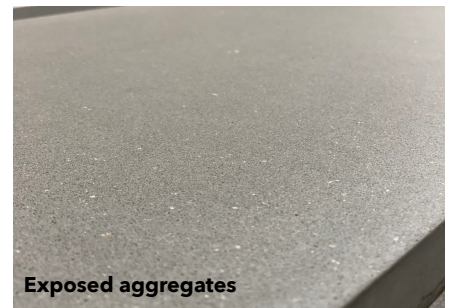
**Color variation**



**Micro cracks**

### SURFACE MICRO CRACKS

Micro cracks are very common in the process and do not affect the structural or functional quality of the concrete. Thin as a hair, they are located only on the surface of the product and any risk of infiltration is unlikely.



**Exposed aggregates**



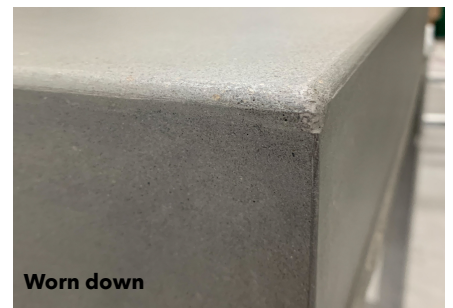
**Contour marks**

### EXPOSED AGGREGATES

Concrete products are made from a diverse mix of aggregate, sand and cement. Some projects could be more polished than others and may expose the aggregate more. These will therefore be visible on the surface of the concrete, which will give more variations in textures and colors.

### CONTOUR MARKS

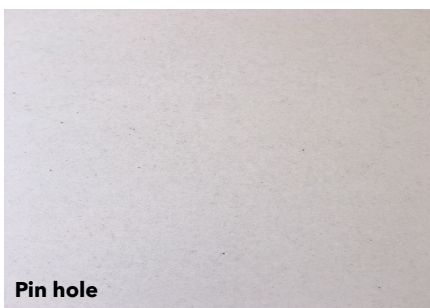
More noticeable around washbasins and sinks, a rough irregular line may be present. The realization of sinks requires molds in two parts, which can leave a mark at the junction of its two molds during the process. This line is uncontrollable, sometimes more striking than others and does not diminish the quality of the product.



**Worn down**

### WORN DOWN

Just like the contour marks, during the production process, it may happen that the corners or ridges can have slight imperfections, irregularities our be rounded, this is part of the character of each unique piece.



**Pin hole**

### PIN HOLE

Like the bubbles caused by air trapped in the mix, pin hole can be seen on the facade and on the surface of concrete products. These holes are tiny and just as sealed as the rest of the surface during the finishing process.

Note: Images shown on social media or for marketing campaign may differ from reality. It is important to remember that each product is unique and that some picture represent an overview and not a close-up. Concrete, like any other stone creates a natural patina over time and these various characteristics can become more pronounced with age.